

PRIX EUROPEEN D'ARCHITECTURE  
PHILIPPE ROTTHIER  
EUROPEAN PRIZE FOR ARCHITECTURE

“THE TIME OF RENOVATION / LE TEMPS DES RÉHABILITATIONS”  
2011

PRESS RELEASE

PHILIPPE ROTTHIER EUROPEAN PRIZE FOR ARCHITECTURE 2011  
FOR THE BEST RENOVATIONS  
BUILT IN EUROPE IN THE LAST FIVE YEARS



PRIZEWINNERS AND PROJECTS SELECTED  
TO BE EXHIBITED AND ILLUSTRATED IN THE 2011 CATALOGUE,  
AMONG THE 101 PROJECTS RECEIVED

Fondation Philippe Rotthier pour l'Architecture



PRIX EUROPEEN D'ARCHITECTURE  
PHILIPPE ROTTHIER  
EUROPEAN PRIZE FOR ARCHITECTURE



"THE TIME OF RENOVATION / LE TEMPS DES RÉHABILITATIONS"  
**2011**

The jury of the Philippe Rotthier European Prize for Architecture, under the presidency of Maurice Culot and in the presence of Philippe Rotthier, founder of the prize, convened on 24th and 25th June 2011.

After having reviewed the 101 entries, from 19 countries, the jury decided: to select thirty projects, of which seven successful candidates will share a prize of €30,000 prize; to award a special prize; to single out three projects for an honorary mention. All of the works will be displayed at the exhibition, which will take place from 16th October to 20th November 2011 at the Architecture Museum - La Loge in Brussels, before being presented in Paris and other cities. They will also feature in the exhibition catalogue.

The jury insisted on selecting works that were still little known, that represented social progress or that encouraged a renewed dialogue between history, the past lives of buildings and the new activities they embrace. All of the contestants were congratulated on the high quality of the works they had presented.

**\* Members of the jury of the Philippe Rotthier European Prize for Architecture :**

- Christian Biecher, architect, France
- Ben Bolgar, architect, United Kingdom
- Anna Heringer, architect, Austria
- André Jacqmain, architect, Belgium
- Christian Lasserre, economist, Belgium
- Jean-Paul Midant, historian, France
- Katia Pecnik, journalist, France
- William Pesson, architect, France
- Jean-Baptiste Pietri, architect, France
- Paolo Portoghesi, architect, theorist and professor of architecture, Italy



**PRIX EUROPEEN D'ARCHITECTURE  
PHILIPPE ROTTHIER  
EUROPEAN PRIZE FOR ARCHITECTURE**



**"THE TIME OF RENOVATION / LE TEMPS DES RÉHABILITATIONS"  
2011**

**PROJECTS AWARDED BY THE JURY OF THE NINTH  
PHILIPPE ROTTHIER EUROPEAN PRIZE FOR ARCHITECTURE**

**Prize for the best participative architecture**

Sil Plaz Cinema in Ilanz, Switzerland (1)  
Prize of € 12 000



(1)

**Prize for the best museum restoration**

Neues Museum in Berlin, Germany (2)  
Prize of € 3 000



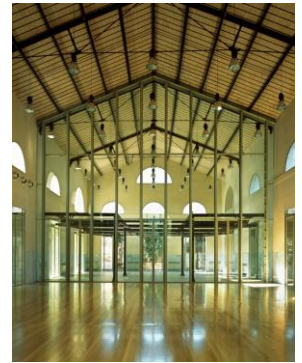
(2)

**Prize for the best conversion of a religious building**  
Elsa Morante library in Lonate Ceppino (Varese), Italy (3)  
Prize of € 3 000

**Prize for the best mix of activities and urban integration**  
The Refrigeration Depot and Ice Palace in Milan, Italy (4)  
Prize of € 3 000



(5)



(6)

**Prize for the best housing renovation**  
Oleanderweg social housing in Halle (Saale), Germany (5)  
Prize of € 3 000

**Prize for the best industrial heritage conservation**  
Rome's former slaughterhouse, Italy (6)  
Prize of € 3 000

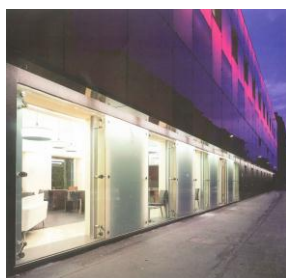


(3)



(7)

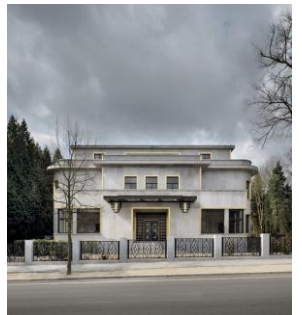
**Prize for the best social conversion**  
The Casa do Médico de São Rafael in Sines, Portugal (7)  
Prize of € 3 000



(4)

**Special jury prize**

The Boghossian Foundation for the Villa Empain  
in Brussels, Belgium (8)



(8)

**Three projects awarded an honorary mention by the jury**

The Chicago Tower, restructuring of the archives building of the  
Cour des Comptes as offices in Paris, France

Creation of a unified contemporary environment around the Temple of Diana in Mérida, Spain

Reconstruction of a part of Reykjavik's central and historic square, Iceland



PRIX EUROPEEN D'ARCHITECTURE  
PHILIPPE ROTTHIER  
EUROPEAN PRIZE FOR ARCHITECTURE



“THE TIME OF RENOVATION / LE TEMPS DES RÉHABILITATIONS”

2011

## PRIZEWINNING PROJECTS

---

### **Prize for best participative architecture**

Sil Plaz Cinema in Ilanz, Switzerland

Conversion of a blacksmith's workshop into a cinema.

Ramun Fidel Capaul and Gordian Blumenthal, architects, Glion /Ilanz, Switzerland

It is already more than 20 years since the last cinema in Ilanz, a small alpine village in Switzerland with 2286 inhabitants, closed its doors. In 1989, a small group of committed film buffs founded the “Film Club of Ilanz” and in 2004 moved into a former blacksmith's forge located below a 19<sup>th</sup> century apartment building. After two years of operating informally, it was clear that the cinema met a demand from a sufficient number of cinema-goers from Ilanz and the surrounding region. The club members therefore decided to convert the premises permanently to their needs and set up a cinema that could also be used for theatre plays and concerts, complete with heating and ventilation system, a projection room and bar-restaurant with a dance floor.

The soundproofing measures, required due to the presence of apartments on the upper floors, involved building inner walls of clay obtained from the surrounding region; the porous surface of the packed clay was left in the raw state as it was particularly suited to absorbing sound.

Clay was also used for the ceiling in the form of panels strengthened with reed stems. The seats were made of solid European oak and covered with cushions in Moroccan leather made by members of the film club.

For the other rooms the architects simply removed recent painting and plaster and repaired the original lime plaster. The existing cement floors were left as they were, complete with their signs of wear. The added elements, such as the bar, projection room and toilets, were made using simple sheet metal and solid oak. The sinks were made using a local natural stone.

The cinema was inaugurated on 3 September 2010.

The jury liked this original coming together of the archaic and the high-tech, between ‘poor art’ and sophisticated media technology. It stressed the originality of the associative approach, the simplicity and beauty of the cinema, the judicious choice and use of materials that are both lasting and ecological, and the way in which the available funds were used wisely: efficient technical equipment, comfortable and lasting seats, rough sheet metal dividing walls, packed clay walls, traditional lime plaster and coatings, natural ventilation.

### **Prize for the best museum restoration**

The Neues Museum in Berlin, Germany

Development of ruins into a museum.

David Chipperfield Architects with Julian Harrap, Berlin, Germany

The Neues Museum on an island in the River Spree in Berlin, known as Museum Island, was designed by the architect Friedrich August Stüler and built between 1841 and 1859, under the rule of Kaiser Friedrich Wilhelm IV. Consisting of two large interior courtyards, it was the first museum on three floors to be designed as a cube with a flat roof. The rich and exuberant interior was in marked contrast to the exterior sobriety.

The museum's architectonic language is seen as being the first interpretation of the Prussian architectural theory that combines modern engineering and neoclassicism within a coherent concept.

The museum suffered extensive bomb damage during the Second World War. Some sections were destroyed entirely and others seriously damaged. Its ruins were long exposed to the elements until 1997 when David Chipperfield Architects won the competition to rebuild the museum in association with Julian Harrap.

The project's key aim was to recreate the original volume and repair and restore the destroyed sections. The original sequence of rooms was thus re-established and placed in relation to the new sections of the museum that ensure continuity with the pre-existing structure.

In October 2009, after 60 years of being left a ruin, the Neues Museum opened its doors to the public. The third building to be restored on Museum Island, it houses the collections of the Egyptian Museum and of the Museum of Prehistory and Early History. The new monumental staircase evokes the former staircase without recreating it and assumes a place within the bare, majestic volume of the hall that has lost its original ornamentation.

It was not until after German reunification in 1990 that the coordinated restoration of Museum Island could begin, incorporating five museums, gardens and exterior spaces.

The rebuilt or repaired sections of the Neues Museum were modernised within the framework set by the rules of historical preservation and the equipment installed in accordance with international standards. Facilities for visitors (auditorium, temporary exhibition areas, museum shop, café, etc.) as well as activities linked to the infrastructure will be sited close to a new entrance building, the James Simon Gallery, also designed by David Chipperfield Architects. Their inauguration is planned for 2014.

### **Prize for the best conversion of a religious building**

Renovation and extension of the "Elsa Morante" public library, housed in the former San Michele chapel in Lonate Ceppino (Varese), Italy.

DAP Studio / Elena Sacco and Paolo Danelli, Milan, Italy

The former San Michele chapel was already home to a public library when the architects were entrusted with the mission of renovating and converting it.

The decision was taken to restore the exterior of the chapel identical to the original form and demolish the rather unfortunate annex that had recently been attached to it. The challenge was to create the library on the two existing floors of the chapel and to build a new detached wing designed as a technical block for the lift and stairs, toilets and archive room.

The truncated form of the new annex reflects the desire to conserve the visual priority of the chapel. The two volumes are linked on the ground floor by a hall with a glazed roof while a narrow footbridge links the annex to the chapel first floor.

The ground floor of the chapel is for readers, the books arranged in compartments that can be expanded or reduced as desired. The previously unoccupied first floor is now a conference room and newspaper reading room.

This small-scale project - just 442 square metres of useful space – impressed the jury with the quality of the plans, the simplicity of the planning of the approaches, the judiciousness of the scale, and the beauty of the contrast between the old and new volumes, both by day and night.

### **Prize for the best mix of activities and urban integration**

The Refrigeration Depot and Ice Palace in Milan, Italy

Conversion of a refrigeration complex into an area for exhibitions, receptions, restoration of works of art, offices and storage.

5+1 AA – Alfonso Femia, Gianluca Peluffo, Simonetta Cenci, Genoa, Italy

The Milan Refrigeration Depot (Magazzini Refrigeranti e Ghiaccio Gondrand Mangili) on the via Piranesi was built in 1899 close to the Porta Vittoria goods station and served originally as a depot for foodstuffs and the production of ice used in their conservation, and later as a store for furs destined for the clothing industry.

Covering 17 000 m<sup>2</sup>, this refrigerated warehouse was one of the biggest in Europe and the symbol of the Lombardy spirit of enterprise at the time of the second industrial revolution, that of electricity.

As ice was produced here, in 1923 it was decided to build an Ice Palace – the Milan ice rink – alongside this cold production plant. Extending to 6000 m<sup>2</sup> the rink was designed on the model of a classical circus with a central rink bordered by grandstand seating.

Between 1923 and 1999, when it was decided to rehabilitate them, the two buildings existed the one next to the other without any communicating link.

The site of the Milan Refrigeration Depot is administered by the Open Care company that manages the buildings and their activities. Open Care entrusted the restoration to the 5+1AA agency that understood the importance of creating a “neighbourhood effect” as the via Piranesi had declined since the closure of the ice rink. A new programme was drawn up for the Ice Palace that was renovated and converted for sociocultural events, while the huge cold storage building is now used for the conservation and restoration of works of art and the long building that stretches along the via Piranesi houses the entrance, a large café, offices and a refrigerated storage area in the basement. This building now has a new green glass exterior, creating a chromatic atmosphere that contrasts, by day and by night, with the drab grey of the environment.

The architects chose to make this former refrigerated complex, located on the outskirts of the city, a visual and symbolic focus of attention, especially when arriving from Linate airport. It acts as a sign located at the junction of the past, as embodied by the existing city, and of the future, as represented by the present development of the Milan suburbs.

The jury appreciated the way in which the architects achieved a synthesis of the site and its history, linking the two buildings and lending to each a specific role in the way it is perceived by users, visitors and passers-by.

### **Prize for the best housing renovation**

Conversion and reorganisation of a social housing block built in the 1960s in prefabricated concrete: Oleanderweg in Halle (Saale), Germany.

Stefan Forster Architekten, Frankfurt am Main, Germany

Following the Second World War, town planning policy moved away from the European urban tradition that involved building neighbourhoods with closed blocks with street facades and rear gardens and courtyards. This tried and tested method of building towns was replaced by a simplistic egalitarian system of monofunctional apartment buildings, laid out like incongruous objects and with no relation to a coherent and nameable public space.

Today the lesson has been learned from this experience that proved disastrous on a large scale and just about everywhere in Europe apartment blocks and high rises have been replaced by living neighbourhoods that renew with the tradition of mixity and urban continuity. Although it will not be possible to systematically demolish all such developments, those that must remain can be improved.

This is why the jury chose to award the conversion of a particularly unsightly apartment block into a building that is much more pleasing to the eye architecturally speaking, which improves the relationship with the public space, and that creates better conditions of housing and conviviality.

Oleanderweg was originally an apartment block on five floors built of prefabricated concrete panels of the kind used everywhere in Germany in the early 1960s. This was partially hollowed out to create a new crenellated silhouette that is less monolithic and coercive. By removing alternating sections of the upper part it was possible to create large balconies on the third and fourth floors. Also, the uniform plan type of the original apartments was replaced by 18 plan types, the number of apartments being reduced from 125 to 81 with sizes ranging from 35 to 135 square metres. The ground floor apartments were combined with the first floor apartments to create duplexes covering 135 square metres, also known as “townhouses”.

The space between the block and the street, formerly used for parking, was laid out as private courtyards and gardens bordered by walls to ensure intimacy for the occupants. Large balconies were also added on the garden side. To save energy, the building was fitted with external insulation of between 12 and 14 centimetres.

The renovated building was completed in April 2010. The development cost 7.5 million euros, with construction costs working out at € 510 per square metre.

### **Prize for the best industrial heritage conservation**

Conversion of Rome’s former slaughterhouse into a cultural centre, Italy.

Massimo Carmassi Studio di Architettura with Risorse per Roma, Faenza, Italy

The restoration of the “Pelanda dei suini” (pigskin tannery), a part of the Testaccio slaughterhouse complex in Rome, situated close to the Tiber, was decided in 2001 and carried out between 2007 and 2010.

The original building was built between 1888 and 1894 according to plans drawn up by the Roman architect Gioacchino Ersoch (1815-1902). In 1924 a gallery was added that modified the building’s original symmetry. On carrying out the renovation, the architects used this gallery to serve the various parts of the building.

After several years of studies and the drawing up of two preliminary designs, the project implemented adopted strong ideas such as the creation of vast glazed walls, supported by metal structures, in accordance with the original Fink trusses, which enable the main aisle to be divided without losing the transparency and view of the whole. Another notable feature is the circular meeting rooms, located above and as an extension to the volumes provided by seven former tanks.

The architects’ choice to preserve a maximum of the existing elements - such as the metal frames, the cauldrons, the boilers, the vats, the tanks and above all the aerial rails that were used to transport the pig carcasses - helps to make this a unique development where the strong presence of the past stimulates an understanding of the site. This steeping in history does not, however, exert a nostalgic pressure on the contemporary activities due to the timeless nature the architects were able to lend to their interventions that are both well judged and restrained and that have the effect of incorporating light as a new and living element bringing joyous life to a formerly secret place, hidden from the city and from sight, dedicated to the slaughter and dismembering of living creatures and the tanning of their skins.

### **Prize for the best social conversion**

The “Casa do Medico” of São Rafael, social centre for elderly people in Sines, Portugal

Conversion of the principal building of a farm (quinta) into a social centre for elderly people.

José Baganha architect, Lisbon, Portugal

The building is situated in the province of Alentejo, on Portugal’s south coast, a holiday resort for families seeking some cool sea air.

In the 1960s the government started work on building an industrial port designed to handle oil from Angola. This vast project involved the creation of transport infrastructure as well as the development of housing and facilities for the population that would be attracted to the area.

After the April 1974 revolution work was stopped and only resumed very recently with the arrival of new industries that gravitated to the vicinity of the refinery. The impact on the environment of these industries and the building of new neighbourhoods has been extremely negative.

The Quinta de São Rafael is a former farm situated on a cliff top overlooking the Atlantic Ocean. It was divided up into building plots without any real concern for planning. All that survived of the original buildings were the 18<sup>th</sup> century former manor house in the Pombalin style and a few outbuildings for the workers and storage. A number of recent characterless habitations subsequently sprang up around them. After 10 years of being totally abandoned, the old buildings were acquired by the Portuguese Order of Doctors to create a residence with 20 bedrooms for elderly doctors requiring assistance, a site for medical meetings, a restaurant, a library and an underground garage.

The architect José Baganha was selected following his response to the call for tenders issued by the Portuguese Order of Doctors. His project consists of restoring the former manor house while combining it with a new building that replaces the former outbuildings that were in a state of ruin.

The new building was designed with a desire to make a clear reference to the region's urban typologies and is linked to the main house by a closed footbridge that crosses the former path that leads to the beach and that the architect wanted to retain

Originally opposed to the restoration of the former house, as all that remained standing was the external walls, the mayor of Sines finally changed his mind at the request of the inhabitants who were attached to the collective memory of their area.

The interiors present a high level of thermal and acoustic comfort and a solar power unit has been fitted under the roof of the new building. The carpentry is in wood, the roof in traditional tiles, while locally made azulejos are used for the interior.

### **Special jury prize**

The Boghossian Foundation for the renovation of the Villa Empain, in Brussels, converted into a centre for art and dialogue between the cultures of the East and West.

Architecture firm MA<sup>2</sup>, Francis Metzger and partners, assisted by Philippe de Bloos, Brussels

The villa was built between 1931 and 1934 according to the plans of the architect Michel Polak in response to the commission from Baron Louise Empain, aged 23 at the time. The building, which forms an exceptional example of the Art Deco style, can be regarded as the counterpart to the Stoclet town house built 20 years earlier.

After many vicissitudes the villa was occupied by squatters and vandalised in the early 2000s. It was bought by the Boghossian Foundation in 2006 that restored it to the original form wherever possible. The villa was listed in 2007. The Foundation has made the villa its international headquarters and a centre of art and dialogue between the cultures of the East and West. The restored Villa Empain and the thematic exhibitions held there have met with a growing success since being opened to the public in April 2010.

## PROJECTS AWARDED WITH AN HONORARY MENTION BY THE JURY

---

### **The Chicago Tower, 13 rue Cambon in Paris, France**

Restructuring of the archives building of the Cour des Comptes as offices. 2005-2009  
Daufresne, Le Garrec et associés, commissioned architects; Goudchaux architecte et associés, associated architect, Paris.

The archives building of the Cour des Comptes (Audit Office) was built in 1910 by the architect Constant Moyaux in reinforced concrete according to the Hennebique process in the "Chicago style". It is laid out on 12 floors, rises to nine storeys and the facades are listed.

To correct the low ceiling height (2.20 m) the architects created breaks and double heights, installed ceiling mirrors and invented a mix of warm and cold colours that create a balance between the coherence of the whole and the necessary specific contrasts.

An exemplary recycling in terms of respect for the past and for the building as well as in the sustainable approach and quality of life for the occupants.

### **Creation of a unified contemporary environment around a Diana Temple, in Mérida, Spain**

José Maria Sánchez García architect, Madrid, Spain

The town of Mérida, founded in 25 BC, capital of Roman Lusitania, was the site of many monuments, including the Diana Temple. It was converted into a palatial residence in the 15<sup>th</sup> century. The original rectangular temple lay at the centre of a free space surrounded by a cryptoportico bearing a portico.

Over time, this space was invaded by constructions.

The new environment returns to the original layout, adopting a homogenous and very simple language that highlights the remains of the temple and contrasts the use of smooth materials with an air of gravity.

### **Reconstruction of the historic corner of Reykjavik's central square, Iceland**

Architects : ARGOS, Gullinsnið and Studio Granda, architects, Reykjavik, Iceland

From 1786 the village of Reykjavik began to expand after having long remained a simple trading place for merchandise. Some of the new buildings were erected at the corner of what would become the main square. The first was built in 1801 using tree trunks. The corner house was built in wood in 1852 and in 1918 a cinema was built nearby with curved facades reminiscent of Art Nouveau.

The cinema was destroyed by fire in 1998 as were the two historic houses in 2007.

The city council then decided to rebuild them all on the foundation of a single underground floor that would connect the buildings. The houses were built as more or less identical copies while an extra floor was added to the cinema that also acquired an exterior that suggested the original.

PROJECTS SELECTED BY THE JURY TO BE EXHIBITED AND ILLUSTRATED IN THE CATALOGUE  
WITH THE PRIZEWINNING AND HONORARY MENTION PROJECTS

---

**Reclaiming of a waste processing site to create a technological and environmental centre and a park in Valdemingómez, Madrid, Spain**

Israel Alba Ramis, architect; José Maria Cristobal, Javier Martinez, Juan Nevado, Fernando Sanz, collaborators, Madrid

**Conversion of the Gaité lyrique theatre into a centre dedicated to digital cultures in Paris, France**

Manuelle Gautrand, architect, Paris

**Redevelopment of the seafront at Valletta, Malta, and creation of a cruise ship terminal**

Architecture Project (AP), Valletta

**Archaeological museum of the Château de Mayenne, France**

Atelier Philippe Madec, architects; Mutabilis, landscaper; Créatime, scenographer, Paris

**Conversion of a railway depot into a cultural centre and residences for artists in Benicasim (Castellón), Spain**

Recetas Urbanas - Santiago Cirugeda, project designers, Seville

**Establishment of the Hermitage Museum in a former retirement home in Amsterdam, the Netherlands**

Hans van Heeswijk architects and interior design, with the architects Merckx and Girod, Michael van Gessel, landscaper, Amsterdam

**Renovation and restructuring of a former mining terminal as a hotel on the volcanic island of Thirassia, Cyclades, Greece**

Maria-Marina Cavaya, Kostis Psychas, architects, Athens

**Renovation of the “Hermanos Lulhé” health centre in San Fernando, Cadix, Spain**

EDDEA Architects, Seville

**Conversion of a boat smithery into a visitors’ centre and exhibition galleries at Chatham Historic Dockyard in Kent, Great Britain**

Van Heyningen and Haward Architects, London

**Conversion of a former distillery into a wine sciences museum and public garden, in Almendralejo, Spain**

Daniel Jiménez, Beatriz Martínez & Jaime Olivera, architects, Badajoz, Spain

**Renovation of the Piarist Centre in Budapest, Hungary**

János Golda, Zoltán Kovács, Erzsébet Mészáros, architects, Budapest

**“Sugar City Sugar Silos”, conversion of two former sugar silos into offices in Halfweg, the Netherlands**

Soeters Van Eldonk and Jos van Eldonk, architects, Amsterdam

**Conversion of a family home into a town hall and public services centre in Luz-Saint-Sauveur, France**

Michel Authié, architect, Paris

**Conversion of a former Schindler factory into the Krakow Museum of Modern Art, Poland**

Claudio Nardi and Leonardo Maria Proli, architects, Florence

**Restructuring and extension of one of the entrance pavilions to the park of the Jardins d'Éole to create a public crèche in Paris, France**

Nathalie Rallet, commissioned architect – BBBM architects' collective, associated architects, Paris

**C-Mine, renovation of the structures of a former coal mine in Genk, Belgium**

51N4E (Johan Anrys, Freek Persyn, Peter Swinnen), architects, Brussels

**Conversion of Bethnal Green's former town hall into apartments, London, Great Britain**

Rare Architecture Studio, architects, London

**Renovation of an 18<sup>th</sup> century passage and shop courtyard in Izmir, Turkey**

Municipality of Konak, Izmir

**Transformation of the former Robinson cork factory into an urban promenade linking two areas of Portalegre, Portugal**

Eduardo Souto de Moura and Garça Correia, architects, Porto



**PRIX EUROPEEN D'ARCHITECTURE  
PHILIPPE ROTTHIER  
EUROPEAN PRIZE FOR ARCHITECTURE**



**“ THE TIME OF RENOVATION / LE TEMPS DES RÉHABILITATIONS ”**

**2011**

An international exhibition will be held from 16 October to 20 November 2011 at the Architecture Museum – The Lodge, in Brussels. It will be accompanied by the publication of a catalogue, available in English and French.

The exhibition will be inaugurated on Saturday 15 October at 11.00 a.m.

**THE PHILIPPE ROTTHIER EUROPEAN ARCHITECTURE PRIZE  
FOR THE RECONSTRUCTION OF THE CITY**

Over the past 30 years, the architect Philippe Rotthier has searched everywhere in Europe for new architecture that is in keeping with the spirit of a site, meets contemporary comfort requirements and respects ecology. Architecture that blends with a town and a landscape rather than destroying them; architecture that wastes neither space nor energy; architecture that maintains a dialogue with the past and with history.

Philippe Rotthier undertook to pursue this quest by awarding an architecture prize. The works are selected by juries that have included such eminent European figures as the writers Adrien Goetz and Françoise Lalande, the journalists Sergio Frau and Katia Pecnik, the designer Matali Crasset, the historians Bruno Foucart, Charles Jencks and David Watkin, the visual artist Jean-Bernard Métais, and the architects Léon Krier, Michael Lykoudis, Dimitri Porphyrios and Oscar Tusquets.

The choices have always tended to be for works that are little known outside of the small circles of the initiated. Institutions or towns have also been rewarded, such as the town halls in Bayonne or Plessis-Robinson in France and in Havana, Cuba. The juries have never hesitated to travel beyond the borders of Europe when they believed that it was merited, awarding prizes for example to the Egyptian Abel Wahed El Wakil, the Tunisian Tarak Ben Miled, and the Société Immobilière de Mayotte.

**CONTACT**

Bertille Amaudric  
**Fondation pour l'Architecture**  
55, rue de l'Ermitage, 1050 Brussels, Belgium  
Tel : 0032.2.642.24.80 / 0032.2.642.24.75  
Fax : 0032.2.642.24.82  
E-mail: [bertilleamaudric@hotmail.com](mailto:bertilleamaudric@hotmail.com)

Site : [www.fondationpourelarchitecture.be](http://www.fondationpourelarchitecture.be)